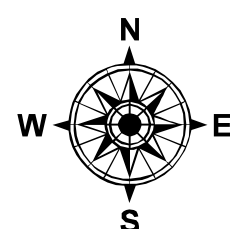


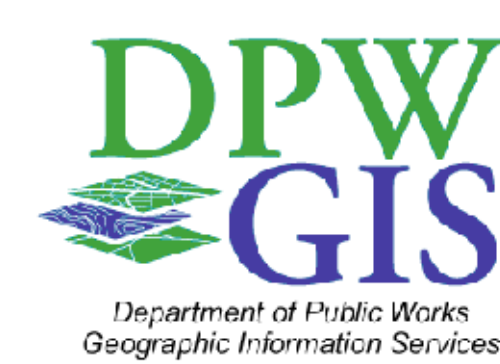
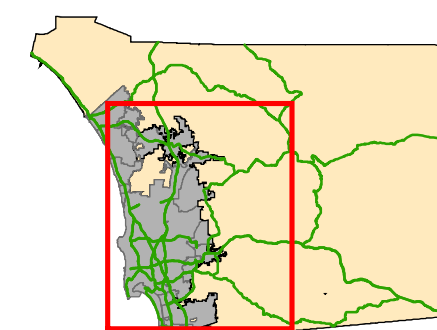
- Legend**
- | | | |
|--|--|--|
| | | |
| | | |
| | | |
| | | |

NOTE:
 The SDA Areas shown have been adopted by the San Diego County Board of Supervisors, with the exception of the Ramona SDA (SDA 8). The Ramona SDA has been proposed but not adopted. 1/15/04

Special Drainage Fee Areas



0 1 2 4 Miles



THIS MAP IS PROVIDED WITHOUT WARRANTY OF ANY KIND, EITHER EXPRESS OR IMPLIED, INCLUDING BUT NOT LIMITED TO, THE IMPLIED WARRANTIES OF MERCHANTABILITY AND FITNESS FOR A PARTICULAR PURPOSE.
 Copyright © 2004, All Rights Reserved.
 This product may contain information from the SANDAG Regional Information System which cannot be reproduced without the written permission of SANDAG.
 This product may contain information which has been reproduced with permission granted by Thomas Brothers Maps.